

HIGH PRESSURE HDPE MOLDED FITTINGS

8" - 12", DR 7 & 9



New injection molded fittings available from AGRU enable you to replace fabricated and wrapped fittings with fully pressure rated injection molded fittings.

Benefits

- Lower cost option when compared to fabricated or overwrapped fittings
- Improved piping system flow rates when compared to fabricated fittings
- Compact in size compared to alternative options and more suitable for tight spaces
- More reliable in performance while reducing risk of failure in high pressure applications

See page 2 for fitting dimensions and details.

Features

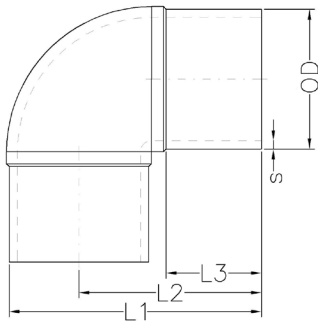
- Made in the USA
- Made from PPI TR-4 PE 100-RC resin for superior performance of stress crack resistance
- FM Approved for pressure class 250 psi and 335 psi (see Tees on page 2)
- Complies with the following product standards: ASTM D2513, D3261, D3350, and AWWA C906



10" DR 7 Molded Tee



Butt Fusion 90 Degree IPS Elbows



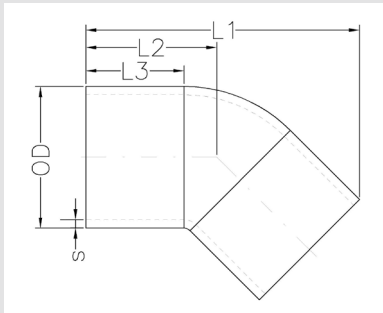
SDR 9 (STANDARD DIMENSION RATIO) 250 PSI (WORKING PRESSURE AS 73° F)

Product Code	Nominal Diameter (inch)	L1 (inch)	L2 (inch)	L3 (inch)	s (inch) Min Wall	OD (inch)	FM Pressure Rating (psi.)
FF-51.113.0008.09	8" IPS	15.75	10.71	4.80	0.958	8.63	-
FF-51.113.0010.09	10" IPS	18.82	12.64	5.55	1.194	10.75	-
FF-51.113.0012.09	12" IPS	20.83	14.29	5.98	1.417	12.75	-

SDR 7 (STANDARD DIMENSION RATIO) 335 PSI (WORKING PRESSURE AS 73° F)

FF-51.113.0008.07	8" IPS	15.75	10.71	4.80	1.232	8.63	-
FF-51.113.0010.07	10" IPS	18.82	12.64	5.55	1.536	10.75	-
FF-51.113.0012.07	12" IPS	20.83	14.29	5.98	1.821	12.75	-

Butt Fusion 45 Degree IPS Elbows



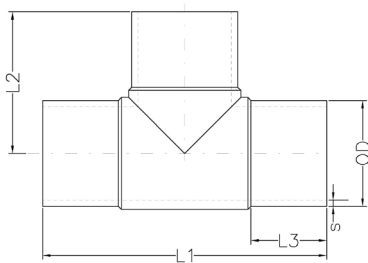
SDR 9 (STANDARD DIMENSION RATIO) 250 PSI (WORKING PRESSURE AS 73° F)

Product Code	Nominal Diameter (inch)	L1 (inch)	L2 (inch)	L3 (inch)	s (inch) Min Wall	OD (inch)	FM Pressure Rating (psi.)
FF-51.110.0008.09	8" IPS	16.97	7.90	4.80	0.958	8.63	-
FF-51.110.0010.09	10" IPS	20.28	9.10	5.60	1.194	10.75	-
FF-51.110.0012.09	12" IPS	21.93	10.12	5.98	1.417	12.75	-

SDR 7 (STANDARD DIMENSION RATIO) 335 PSI (WORKING PRESSURE AS 73° F)

FF-51.110.0008.07	8" IPS	16.97	7.90	4.80	1.232	8.63	-
FF-51.110.0010.07	10" IPS	20.28	9.10	5.60	1.536	10.75	-
FF-51.110.0012.07	12" IPS	21.93	10.12	5.98	1.821	12.75	-

Butt Fusion IPS Tees



SDR 9 (STANDARD DIMENSION RATIO) 250 PSI (WORKING PRESSURE AS 73° F)

Product Code	Nominal Diameter (inch)	L1 (inch)	L2 (inch)	L3 (inch)	s (inch) Min Wall	OD (inch)	FM Pressure Rating (psi.)
FF-51.115.0008.09	8" IPS	23.03	11.46	5.67	0.958	8.625	250
FF-51.115.0010.09	10" IPS	27.17	13.54	6.22	1.194	10.750	250
FF-51.115.0012.09	12" IPS	29.72	14.84	6.77	1.417	12.750	250

SDR 7 (STANDARD DIMENSION RATIO) 335 PSI (WORKING PRESSURE AS 73° F)

FF-51.115.0008.07	8" IPS	23.03	11.46	5.67	1.232	8.625	335
FF-51.115.0010.07	10" IPS	27.17	13.54	6.22	1.536	10.750	335
FF-51.115.0012.07	12" IPS	29.72	14.84	6.77	1.821	12.750	335

