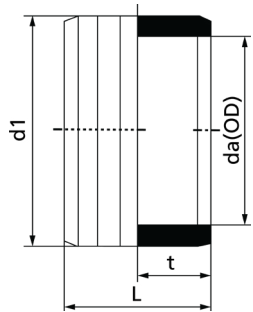


# IPS Electro-Fusion Couplings

BILFILAR



- Molded from black PE 100/ 4710/ 3408 & NSF-61 approved resin
- Complies with the following product standards: ASTM D2513, D3261, D3350, F1055, and AWWA C906

### SDR 11 (WATER 200 PSI, GAS\*)

Product Code	Nominal Diameter da OD (inch)	L (inch)	d (inch)	d1 (inch)	t (inch)	Weight (lbs.)
RI-51.373.0018.11	18" IPS	13.780	x	22.008	6.890	57.771
RI-51.373.0020.11	20" IPS	14.567	x	24.449	7.283	78.278
RI-51.373.0022.11	22" IPS	14.961	x	26.969	7.480	95.697
RI-51.373.0024.11	24" IPS	16.142	x	29.331	8.071	123.480
RI-51.373.0026.11	26" IPS	16.142	x	31.811	8.071	148.838
RI-51.373.0028.11	28" IPS	16.142	x	34.252	8.071	179.708

### SDR 33-17 (WATER 150 PSI, GAS\*)

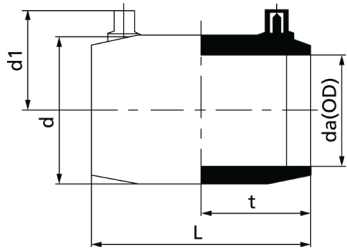
Product Code	Nominal Diameter da OD (inch)	L (inch)	d (inch)	d1 (inch)	t (inch)	Weight (lbs.)
RI-51.373.0018.17	18" IPS	13.780	x	20.433	6.890	34.178
RI-51.373.0020.17	20" IPS	14.567	x	22.677	7.283	45.203
RI-51.373.0022.17	22" IPS	14.961	x	25.197	7.480	59.976
RI-51.373.0024.17	24" IPS	16.142	x	27.205	8.071	70.560
RI-51.373.0026.17	26" IPS	16.142	x	29.488	8.071	84.893
RI-51.373.0028.17	28" IPS	16.142	x	31.772	8.071	104.738
RI-51.373.0030.17	30" IPS	19.685	x	34.016	9.843	145.310
RI-51.373.0032.17	32" IPS	19.685	x	36.299	9.843	166.257
RI-51.373.0034.17	34" IPS	20.079	x	38.504	10.039	183.015
RI-51.373.0036.17	36" IPS	20.079	x	40.906	10.039	209.475
RI-51.373.0042.17	42" IPS	20.866	x	47.638	10.433	304.731
RI-51.373.0048.17	48" IPS	21.260	x	54.409	10.630	403.515

All dimensions shown are nominal and subject to manufacturing tolerance. OD and minimum wall are determined in accordance with ASTM standards Drawing shown is an approximation only. Pressures listed are sustainable maximum operating pressure at 73°F.

\* The maximum pressure for gas applications should be calculated based on the applicable local and federal regulations.

# IPS Electro-Fusion Couplings

## MONOFILAR



- Molded from black PE 100/ 4710/ 3408 & NSF-61 approved resin
- Complies with the following product standards: ASTM D2513, D3261, D3350, F1055, and AWWA C906

### SDR 11 (WATER 200 PSI, GAS\*)

Product Code	Nominal Diameter da OD (inch)	L (inch)	d (inch)	d1 (inch)	t (inch)	Weight (lbs.)
RI-51.173.0050.11	½" IPS	2.913	1.220	1.378	1.457	0.077
RI-51.173.0075.11	¾" IPS	3.150	1.406	1.496	1.575	0.093
RI-51.173.0001.11	1" IPS	3.465	1.693	1.654	1.732	0.130
RI-51.173.0125.11	1 ¼" IPS	3.898	2.146	1.752	1.949	0.209
RI-51.173.0150.11	1 ½" IPS	4.382	2.531	1.969	2.191	0.351
RI-51.173.0002.11	2" IPS	5.031	3.130	2.224	2.516	0.542
RI-51.173.0003.11	3" IPS	5.551	4.331	2.835	2.736	0.853
RI-51.173.0004.11	4" IPS	5.984	5.591	3.346	2.953	1.323
RI-51.173.0006.11	6" IPS	7.126	8.110	4.390	3.524	3.308
RI-51.173.0008.11	8" IPS	9.094	10.551	5.433	4.469	6.836
RI-51.173.0010.11	10" IPS	9.843	13.228	6.496	4.843	13.305
RI-51.173.0012.11	12" IPS	10.236	15.709	7.480	5.039	18.302
RI-51.173.0014.11	14" IPS	11.024	17.402	8.819	5.433	30.650
RI-51.173.0016.11	16" IPS	11.890	x	19.646	5.945	42.336

All dimensions shown are nominal and subject to manufacturing tolerance. OD and minimum wall are determined in accordance with ASTM standards Drawing shown is an approximation only. 2"-12" E-Couplings are FM Approved. Pressures listed are sustainable maximum operating pressure at 73°F.

\* The maximum pressure for gas applications should be calculated based on the applicable local and federal regulations.