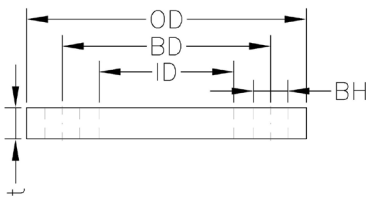


ANSI Polypropylene Backing Ring



- For use in high corrosive environments
- Longer service life than DI backing rings
- Connecting dimensions: ANSI/ASME B16.5, class 150

SDR 17-9 (STANDARD DIMENSION RATIO) 125 PSI (WORKING PRESSURE AS 73.4° F)

Product Code	Nominal Diameter (inch)	BH (inch)	t (inch)	Diameter (inch)			Weight (lbs.)
				OD	BD	ID	
RO-11.013.0020.11	20-1/2" - MOP 16 bar	0.63	0.47	3.74	2.38	2.20	0.45
RO-11.013.0025.11	25-3/4" - MOP 16 bar	0.63	0.47	4.02	2.75	2.68	0.53
RO-11.013.0032.11	32-1" - MOP 16 bar	0.63	0.63	4.49	3.12	3.31	0.86
RO-11.013.0040.11	40-1 1/4" - MOP 16 bar	0.63	0.63	5.12	3.50	4.02	1.17
RO-11.013.0050.11	50-1 1/2" - MOP 16 bar	0.63	0.71	5.24	3.88	4.88	1.24
RO-11.013.0063.11	63-2" - MOP 16 bar	0.79	0.71	6.38	4.75	6.14	1.86
RO-11.013.0075.11	75-2 1/2" - MOP 16 bar	0.79	0.71	7.24	5.50	7.24	2.35
RO-11.013.0090.11	90-3" - MOP 16 bar	0.79	0.71	7.64	6.00	8.74	2.43
RO-11.013.0110.11	110/125-4" - MOP 16 bar	0.79	0.71	9.02	7.50	10.47	3.47
RO-11.013.0160.11	160-6" - MOP 16 bar	0.87	0.94	11.14	9.50	14.02	5.29
RO-11.013.0200.11	200/225-8" - MOP 16 bar	0.87	0.94	13.58	11.75	18.58	7.72
RO-11.013.0250.11	250-10" - MOP 16 bar	0.98	1.06	16.22	14.25	22.68	13.67
RO-11.013.0315.11	315-12" - MOP 16 bar	0.98	1.06	19.17	17.00	26.61	28.75

Notes:

1. All dimensions shown are nominal and subject to manufacturing tolerance OD and minimum wall are determined in accordance with ASTM standards. Drawing shown is an approximation only.
2. Please refer to DOT pressure requirements for natural gas applications.
3. Fittings are marked to meet standards to which the product is produced and labeled.
4. All Backing Rings produced at AGRU Austria.