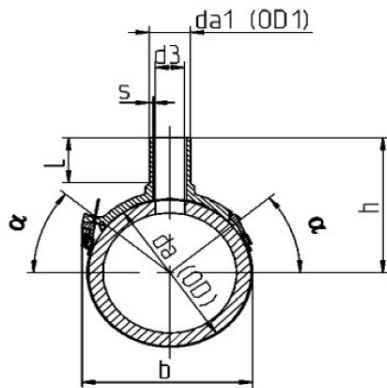


IPS Electro-Fusion Branch Saddle



SDR 11 - STANDARD DIMENSION RATIO / WATER - MOP 200 PSI (PN 16)

Code	Nominal Diameter [INCH]	da(OD) [INCH]	da1(OD1) [inch]	h [INCH]	d3 [INCH]	b [INCH]	s [INCH]	alph [°]	L [INCH]	Weight [LBS]
51.288.0301.11	3"/1" IPS	3	1	5.07	0.69	4.86	0.12	0	2.36	0.40
51.288.0325.11	3"/1 1/4" IPS	3	1.25	5.07	0.94	4.86	0.12	0	2.36	0.40
51.288.0302.11	3"/2" IPS	3	2	5.52	1.53	4.86	0.12	0	2.36	0.40
51.288.0401.11	4"/1" IPS	4	1	5.61	0.69	5.65	0.12	0	2.36	0.46
51.288.0425.11	4"/1 1/4" IPS	4	1.25	5.61	0.94	5.65	0.12	0	2.36	0.46
51.288.0402.11	4"/2" IPS	4	2	6.20	1.53	5.65	0.12	0	2.36	0.46
51.288.0601.11	6"/1" IPS	6	1	6.93	0.69	7.62	0.12	0	2.36	0.98
51.288.0625.11	6"/1 1/4" IPS	6	1.25	6.93	0.94	7.62	0.12	0	2.36	0.98
51.288.0602.11	6"/2" IPS	6	2	7.56	1.53	7.62	0.12	0	2.36	0.98
51.288.0603.11	6"/3" IPS	6	3	8.27	2.53	7.62	0.12	0	2.36	0.98
51.288.0604.11	6"/4" IPS	6	4	8.27	3.53	7.62	0.12	0	2.36	0.98
51.288.0801.11	8"/1" IPS	8	1	7.74	0.69	9.63	0.12	0	2.36	1.02
51.288.0825.11	8"/1 1/4" IPS	8	1.25	7.74	0.94	9.63	0.12	0	2.36	1.02
51.288.0802.11	8"/2" IPS	8	2	8.37	1.53	9.63	0.12	0	2.36	1.02
51.288.0803.11	8"/3" IPS	8	3	9.08	2.53	9.63	0.12	0	2.36	1.02
51.288.0804.11	8"/4" IPS	8	4	9.08	3.53	9.63	0.12	0	2.36	1.02
51.288.1002.11	10"/2" IPS	10	2	9.99	1.31	10.47	0.23	40	3.03	1.21
51.288.1003.11	10"/3" IPS	10	3	10.78	2.31	10.47	0.23	40	3.03	1.21
51.288.1004.11	10"/4" IPS	10	4	10.78	3.31	10.47	0.23	40	3.03	1.21
51.288.1202.11	12"/2" IPS	12	2	10.80	1.31	11.57	0.23	40	3.03	1.36
51.288.1203.11	12"/3" IPS	12	3	11.55	2.31	11.57	0.23	40	3.03	1.36
51.288.1204.11	12"/4" IPS	12	4	11.55	3.31	11.57	0.23	40	3.03	1.36

Notes:

- All dimensions shown are nominal and subject to manufacturing tolerance OD and minimum wall are determined in accordance with ASTM standards. Drawing shown is an approximation only.
- Fittings are marked to meet standards to which the product is produced and labeled.