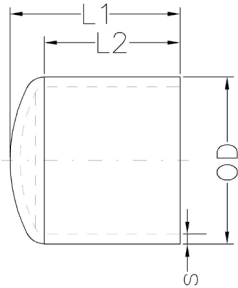


IPS Butt End Caps



- Molded from black PE 100/ 4710 resin & NSF-61 certified
- Complies with the following product standards: ASTM D2513, D3261, D3350, and AWWA C906

SDR 17 (STANDARD DIMENSION RATIO) 125 PSI (WORKING PRESSURE AT 73.4° F)

Product Code	Nominal Diameter (inch)	L1 (inch)	L2 (inch)	s (inch) Min Wall	OD (inch)	Weight (lbs.)
FF-51.114.0002.17	2" IPS	3.15	2.48	0.14	2.38	0.13
FF-51.114.0003.17	3" IPS	4.57	3.62	0.21	3.50	0.40
FF-51.114.0004.17	4" IPS	5.16	3.90	0.26	4.50	0.71
FF-51.114.0006.17	6" IPS	6.69	4.72	0.39	6.63	1.93
FF-51.114.0008.17	8" IPS	8.43	5.83	0.51	8.63	4.30
FF-51.114.0010.17	10" IPS	9.57	6.30	0.63	10.75	7.54
FF-51.114.0012.17	12" IPS	11.46	7.48	0.75	12.75	12.39

SDR 11 (STANDARD DIMENSION RATIO) 200 PSI (WORKING PRESSURE AS 73.4° F)

Product Code	Nominal Diameter (inch)	L1 (inch)	L2 (inch)	s (inch) Min Wall	OD (inch)	Weight (lbs.)
FF-51.114.0075.11	¾" IPS	2.05	1.77	0.10	1.05	0.02
FF-51.114.0001.11	1" IPS	2.20	1.77	0.12	1.32	0.04
FF-51.114.0125.11	1¼" IPS	2.52	1.99	0.15	1.66	0.07
FF-51.114.0150.11	1½" IPS	2.83	2.20	0.17	1.90	0.07
FF-51.114.0002.11	2" IPS	3.15	2.48	0.22	2.38	0.18
FF-51.114.0003.11	3" IPS	4.57	3.62	0.32	3.50	0.62
FF-51.114.0004.11	4" IPS	5.16	3.90	0.41	4.50	1.04
FF-51.114.0006.11	6" IPS	6.69	4.72	0.60	6.63	3.01
FF-51.114.0008.11	8" IPS	8.43	5.83	0.79	8.63	6.33
FF-51.114.0010.11	10" IPS	9.57	6.30	0.98	10.75	11.11
FF-51.114.0012.11	12" IPS	11.46	7.48	1.16	12.75	18.56

Notes:

1. All dimensions shown are nominal and subject to manufacturing tolerance OD and minimum wall are determined in accordance with ASTM standards. Drawing shown is an approximation only.
2. Please refer to DOT pressure requirements for natural gas applications.
3. Fittings are marked to meet standards to which the product is produced and labeled.