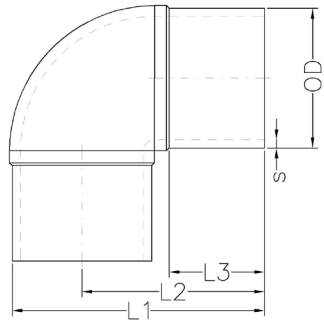


Butt 90 Degree IPS Elbows



- Molded from black PE 100/ 4710 resin & NSF-61 certified
- Complies with the following product standards: ASTM D2513, D3261, D3350, and AWWA C906

SDR 9 (STANDARD DIMENSION RATIO) 250 PSI (WORKING PRESSURE AS 73.4° F)

Product Code	Nominal Diameter (inch)	L1 (inch)	L2 (inch)	L3 (inch)	s (inch) Min Wall	OD (inch)	Weight (lbs.)
RF-EL90-R9-02.00	2" IPS	5.75	4.25	2.45	0.26	2.38	0.77
RF-EL90-R9-03.00	3" IPS	7.53	5.65	3.05	0.39	3.50	1.76
RF-EL90-R9-04.00	4" IPS	8.68	6.13	3.25	0.50	4.50	3.090
RF-EL90-R9-06.00	6" IPS	12.80	9.28	4.05	0.74	6.63	12.7

SDR 7 (STANDARD DIMENSION RATIO) 335 PSI (WORKING PRESSURE AS 73.4° F)

Product Code	Nominal Diameter (inch)	L1 (inch)	L2 (inch)	L3 (inch)	s (inch) Min Wall	OD (inch)	Weight (lbs.)
FF-51.113.0002.07	2" IPS	5.75	4.25	2.45	0.34	2.38	0.920
FF-51.113.0003.07	3" IPS	7.53	5.65	3.05	0.50	3.50	2.13
FF-51.113.0004.07	4" IPS	8.68	6.13	3.25	0.64	4.50	3.82
FF-51.113.0006.07	6" IPS	12.80	9.28	4.05	0.95	6.63	12.5

Notes:

- All dimensions shown are nominal and subject to manufacturing tolerance OD and minimum wall are determined in accordance with ASTM standards. Drawing shown is an approximation only.
- Please refer to DOT pressure requirements for natural gas applications.
- Fittings are marked to meet standards to which the product is produced and labeled.