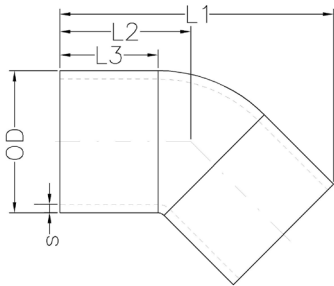


# Butt 45 Degree IPS Elbows



- Molded from black PE 100/ 4710 resin & NSF-61 certified
- Complies with the following product standards: ASTM D2513, D3261, D3350, and AWWA C906

### SDR 9 (STANDARD DIMENSION RATIO) 250 PSI (WORKING PRESSURE AS 73.4° F)

Product Code	Nominal Diameter (inch)	L1 (inch)	L2 (inch)	L3 (inch)	s (inch) Min Wall	OD (inch)	Weight (lbs.)
R-EL45-R9-02.00	2" IPS	8.28	4.20	2.40	0.26	2.38	0.55
R-EL45-R9-03.00	3" IPS	10.15	5.00	2.50	0.39	3.50	2.995
R-EL45-R9-04.00	4" IPS	10.70	5.07	2.80	0.50	4.50	3.155
R-EL45-R9-06.00	6" IPS	16.27	8.13	4.00	0.74	6.63	12.40

### SDR 7 (STANDARD DIMENSION RATIO) 335 PSI (WORKING PRESSURE AS 73.4° F)

Product Code	Nominal Diameter (inch)	L1 (inch)	L2 (inch)	L3 (inch)	s (inch) Min Wall	OD (inch)	Weight (lbs.)
R-EL45-R7-02.00	2" IPS	8.28	4.20	2.40	0.34	2.38	0.65
R-EL45-R7-03.00	3" IPS	10.15	5.00	2.50	0.50	3.50	3.21
R-EL45-R7-04.00	4" IPS	10.70	5.07	2.80	0.64	4.50	3.65
R-EL45-R7-06.00	6" IPS	16.27	8.13	4.00	0.95	6.63	11.765

Notes:

- All dimensions shown are nominal and subject to manufacturing tolerance OD and minimum wall are determined in accordance with ASTM standards. Drawing shown is an approximation only.
- Please refer to DOT pressure requirements for natural gas applications.
- Fittings are marked to meet standards to which the product is produced and labeled.