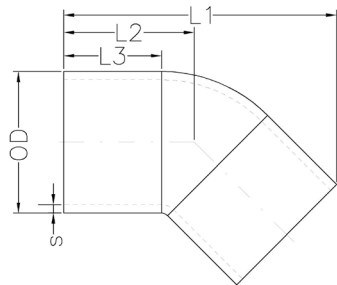


## Butt 45 Degree IPS Elbows



- Molded from black PE 100/ 4710 resin & NSF-61 certified
- Complies with the following product standards: ASTM D2513, D3261, D3350, and AWWA C906

### SDR 17 (STANDARD DIMENSION RATIO) 125 PSI (WORKING PRESSURE AS 73.4° F)

Product Code	Nominal Diameter (inch)	L1 (inch)	L2 (inch)	L3 (inch)	s (inch) Min Wall	OD (inch)	Weight (lbs.)
FF-51.110.0002.17	2" IPS	6.38	3.23	2.52	0.14	2.38	0.26
FF-51.110.0003.17	3" IPS	9.09	4.57	3.39	0.21	3.50	0.81
FF-51.110.0004.17	4" IPS	10.24	5.04	3.58	0.26	4.50	1.48
FF-51.110.0006.17	6" IPS	13.82	6.61	4.53	0.39	6.63	4.28
FF-51.110.0008.17	8" IPS	16.97	8.15	5.63	0.51	8.63	8.69
FF-51.110.0010.17	10" IPS	20.28	9.61	6.18	0.63	10.75	14.44
FF-51.110.0012.17	12" IPS	21.93	10.04	6.50	0.75	12.75	25.18

### SDR 11 (STANDARD DIMENSION RATIO) 200 PSI (WORKING PRESSURE AS 73.4° F)

Product Code	Nominal Diameter (inch)	L1 (inch)	L2 (inch)	L3 (inch)	s (inch) Min Wall	OD (inch)	Weight (lbs.)
FF-51.110.0075.11	¾" IPS	4.53	2.44	1.77	0.10	1.05	0.06
FF-51.110.0001.11	1" IPS	4.84	2.56	1.85	0.12	1.32	0.10
FF-51.110.0125.11	1¼" IPS	5.71	2.99	2.05	0.15	1.66	0.18
FF-51.110.0150.11	1½" IPS	6.14	3.23	2.24	0.17	1.90	0.25
FF-51.110.0002.11	2" IPS	6.38	3.23	2.52	0.22	2.38	0.38
FF-51.110.0003.11	3" IPS	9.09	4.57	3.39	0.32	3.50	1.16
FF-51.110.0004.11	4" IPS	10.24	5.04	3.58	0.41	4.50	2.17
FF-51.110.0006.11	6" IPS	13.82	6.61	4.53	0.60	6.63	6.00
FF-51.110.0008.11	8" IPS	16.97	8.15	5.63	0.79	8.63	12.61
FF-51.110.0010.11	10" IPS	20.28	9.61	6.18	0.98	10.75	22.80
FF-51.110.0012.11	12" IPS	21.93	10.04	6.50	1.16	12.75	34.61

Notes:

- All dimensions shown are nominal and subject to manufacturing tolerance OD and minimum wall are determined in accordance with ASTM standards. Drawing shown is an approximation only.
- Please refer to DOT pressure requirements for natural gas applications.
- Fittings are marked to meet standards to which the product is produced and labeled.