

AGRU Facts

The
Plastics
Experts.

OVER 70 YEARS OF EXCELLENCE IN PLASTICS
AND GEOSYNTHETICS



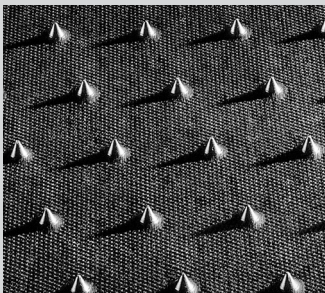
CLOSURETURF®

- Economical Subtitle D final cover system
- Predictable performance through life of cover system
- Eliminates need for cover soil and vegetation maintenance



AGRU Drain Liner®

- Efficient leak detection system
- Double-lined application
- Cost effective



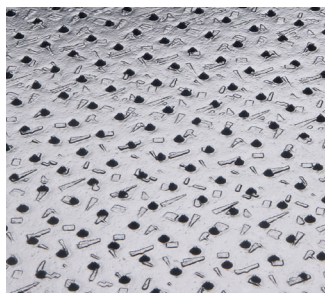
Super Gripnet® Liner

- Combines drainage and friction in one liner
- Excellent drainage
- Highest friction angles available in the industry
- Cost saving closure option



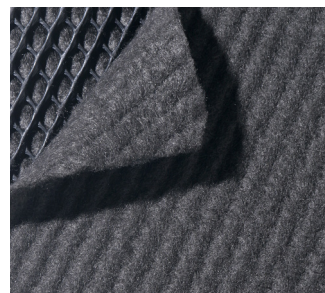
AGRUTex®

- Wide range of product offerings from 3 oz/yd² to 32+ oz/yd²
- Suitable for separation, stabilization, filtration, and cushioning applications



MicroSpike® Liner

- Structured surface
- Smooth weld edge
- Consistent texturing
- High mechanical properties
- HDPE and LLDPE
- Available in black and white, and conductive



AGRU Geocomposite

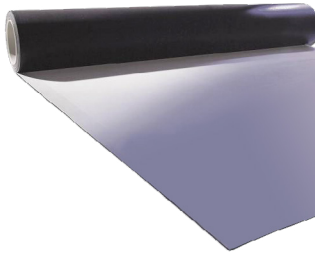
- Drainage/filtration media
- Single- and double-sided
- High compression & flow
- Gas venting capabilities
- Excellent cushioning
- 160-300 mil core net

AGRU America, Inc.
800-373-2478
agruamerica.com

843-546-0600
salesmkg@agruamerica.com



www.agruamerica.com



AGRU Smooth Liner®

- Optimum weld speed and weld quality
- Consistent thickness
- 23' wide
- HDPE and LLDPE
- Available in black and white, and conductive



Sure-Grip®

- Concrete protective liner
- Variety of applications including manholes, pipes & cast in place
- High pullout strength
- Various resins/thicknesses



Transition Fittings

- Exceptional corrosion resistance and extended service life
- Available from 1 1/4"
- CTS through 4" IPS sizes
- 3" Externally Coated Thread End Transition



Hydroclick®

- Rehabilitation of potable water systems
- Long life, low maintenance
- Easy, leak tight installation
- NSF 61



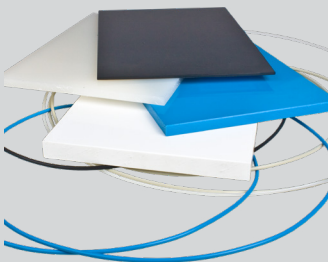
AGRU GeoClay®

- Hydraulically superior to several feet of 1x10-7 cm/sec compacted clay
- Natural sodium bentonite self-healing self-sealing
- Polymer-enhanced for leachage resistance



AGRUFlex®

- Tunnel waterproofing system
- Signal layer
- State-of-the-art VELCRO® and induction welding attachments
- Waterstop profiles/accessories



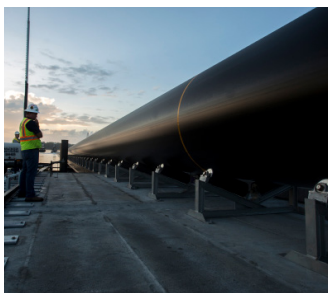
Sheet Stock

- Available in PE, PP, PVDF, ECTFE, FEP, and PFA
- Available with fabric backing
- High and low temp applications
- Large variety of sizes



Electrofusion Fittings

- Advanced fusion welding using automated electrofusion processors
- Fusion joint integrity with ease of installation in tight areas
- Eliminates internal bead for increased flow
- Diameters up to OD 48" IPS



Large Diameter Pipe

- Outstanding chemical and corrosion resistance
- Strong leak-free fusion welded joints
- Long-term durability, ductility and flexibility
- Available in diameters 24" - 138"



HDPE Pipe Fittings

- Same chemical and corrosion resistance of HDPE pipe
- Full HDPE fittings range assuring max. system compatibility
- Exceptional piping system design capability
- Strong leak-free fusion welded joints

AGRU America, Inc.
800-373-2478
agruamerica.com

843-546-0600
salesmkg@agruamerica.com

This information is provided for reference purposes only and is not intended as a warranty or guarantee. Agru America, Inc. assumes no liability in connection with the use of this information. CLOSURETURF® is a U.S. registered trademark which designates a product from Watershed Geosynthetics, LLC. This product is the subject of issued U.S. and foreign patents and/or pending U.S. and foreign patent applications.

www.agruamerica.com