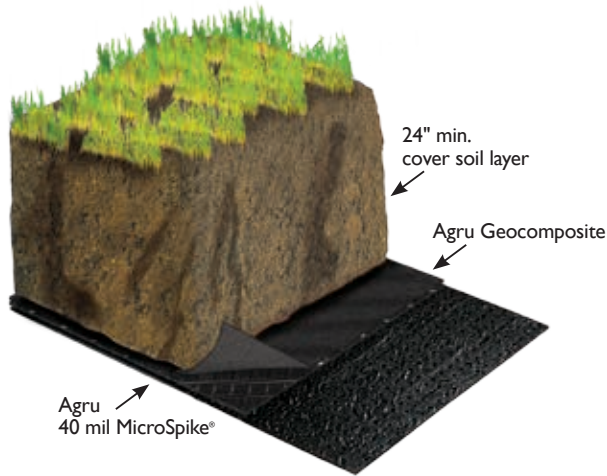


# Agru America Closure Solutions

Subtitle D Compliant Closure Systems for Impoundments and Landfills

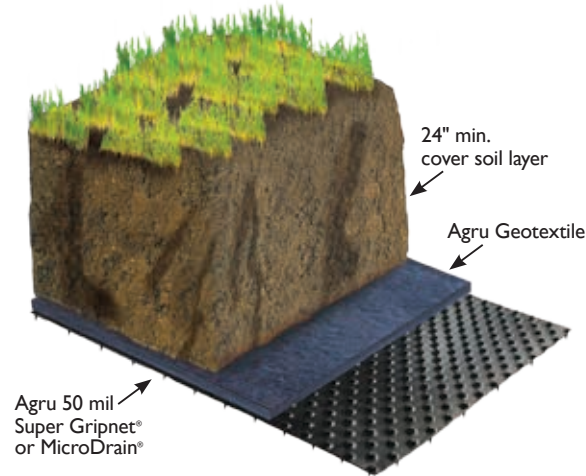


## Geocomposite Closure System

The traditional method for closures, which utilizes Agru MicroSpike® or Agru Smooth Liner® geomembrane, overlain by a geocomposite drainage layer, soil cover layer and vegetative layer.

### Agru Advantages:

- Cost saving geocomposite drainage layer
- Highest and most consistent asperity height available provides consistent and dependable shear strengths for delivered product

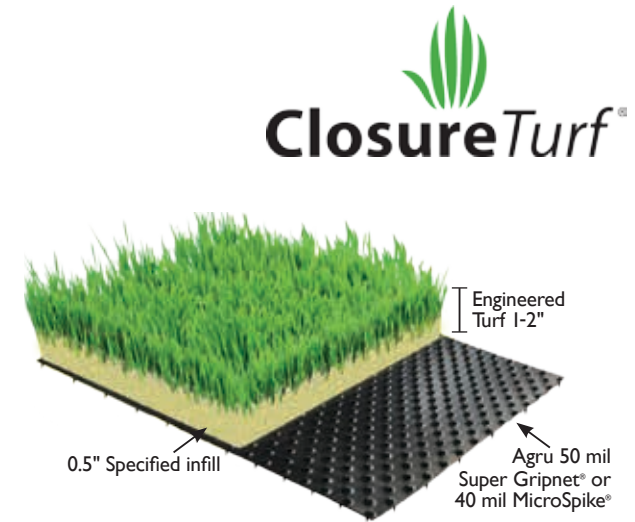


## Integrated Drainage System (IDS)

The IDS solution features an Agru structured geomembrane called Super Gripnet® or MicroDrain® Liner overlain with an AgruTex® geotextile. Simply place soil on top of the geotextile to complete the system. The greatest performing, and most versatile of the traditional methods, the IDS system can feature an aggressive texturing on the underside of the Super Gripnet® geomembrane providing unmatched shear strength and stability even on steepened slope applications.

### Agru Advantages:

- IDS reduces drainage material layers and can provide substantial cost savings
- Installs 15% faster when compared to the traditional closure system
- High factor of safety for steep-slope stability



## ClosureTurf® System

A patented final cover system comprised of Agru's Super Gripnet® overlain by engineered synthetic turf infilled with sand. ClosureTurf® is a proven "hybrid" composite system that outperforms traditional closure methodologies.

### Agru Advantages:

- Approved as an EPA Subtitle-D compliant final cover system since 2009
- Installs on average more than 50% faster than the traditional closure system
- Eliminates the need for large quantities of soil and related equipment activities, dramatically improving site safety, while often lowering construction costs
- Reduces average maintenance costs by roughly \$1,300 per acre per year
- ClosureTurf® dramatically improves runoff water quality, making it an effective BMP for Clean Water Act requirements
- Reduces the carbon footprint by approximately 80%



Chris Eichelberger, VP Technical Marketing  
800-373-2478 • ceichelberger@agruamerica.com

www.AgruAmerica.com • 500 Garrison Road, Georgetown, South Carolina 29440

This information is provided for reference purposes only and is not intended as a warranty or guarantee. Agru America, Inc. assumes no liability in connection with the use of this information. ClosureTurf® is a product of Watershed Geosynthetics LLC. U.S. Patent Nos. 7,682,105 & 8,585,322. Canada Patent No. 2,663,170 • Other Patents Pending.



# Innovative Products, Engineered Solutions and Decades of Closure



Photo courtesy of MIRA