



AGRU AMERICA TIMES

Winter Edition 2015

In This Issue:

Agru GeoClay (GCL) Production in Georgetown, SC
Surpasses 35,000,000 Square Feet

Agru America Announces Production of Molded PE
and Transition Fittings in Andrews, SC

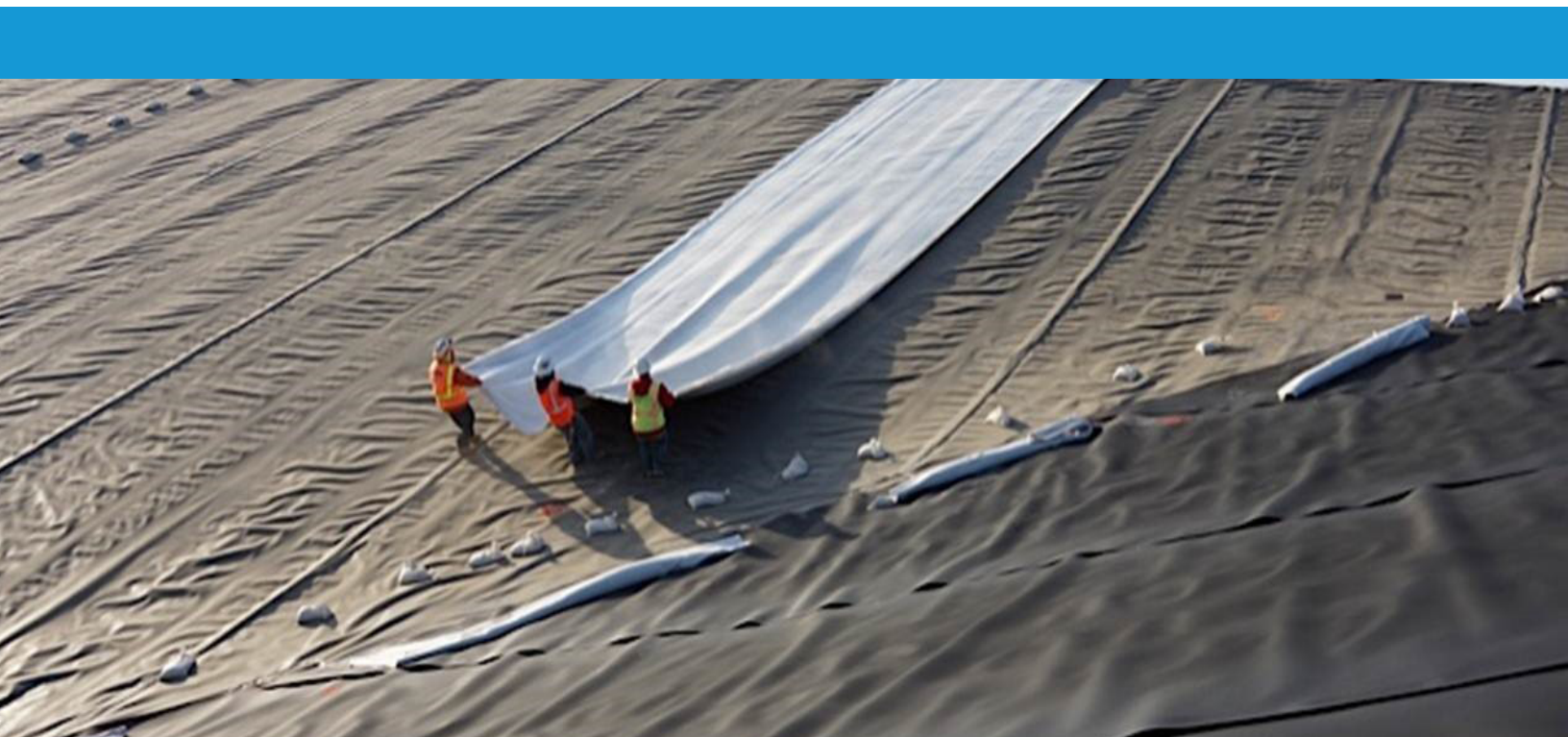
Agru America's Sure-Grip CPL Manufacturing Line
Records 1,000,000 Square Feet of Production.



Agru GeoClay® (GCL) Production in Georgetown, SC Surpasses 35,000,000 Square Feet

As of December 2015, Agru America's new Geo-synthetic Clay Liner (GCL) manufacturing line in Georgetown, installed in 2013, has produced more than 35,000,000 square feet of quality material. Agru GeoClay® products are available in a variety of bentonite loading specifications with 0.5, 0.75 and 0.89 lb./s.f. being the most common. The geotextile cap is non-woven textile ranging in weight from 3 oz./yd. to 6 oz./yd. or heavier as needed to meet specific project requirements. The carrier textile may be either a woven or a scrim reinforced non-woven geotextile. The peel strength may be increased from a standard 3.5 lb peel (ASTM D6496) to 5 lb., 10 lb. or more as needed to meet project specific interface and/or

internal shear conditions. Regarding uses of GCL, a reinforced woven/non-woven GCL is normally applied on moderate slopes – up to about 3:1. A double non-woven is typically used at higher overburden pressures and/or slopes up to a 2:1. An unreinforced, lightly needle-punched variety is also available for flat lying areas (ie, slopes up to about 10:1). Given the different design specifications and potential applications, Agru GeoClay® has become a valuable addition to Agru America's product offerings.





Agru America Announces Production of Molded PE and Transition Fittings in Andrews, SC

Agru America has announced that the production of molded PE fittings has begun at the company's newly updated fittings facility in Andrews, SC. This new venture has brought approximately thirteen new jobs to the Andrews, SC community, with additional positions planned for the near future. New molding machines and material handling robots have been set up and are producing injection molded 45° and 90° Elbows, Tees, Flange Adapters, End Caps, and Reducers in the size range of ¾" through 12" IPS. In addition to the molding machines, additional equipment such as a CNC lathe and a custom de-gating tool have been installed to handle all secondary operations needed in the production process. A fully functional tool and die shop is being set up in house to handle all maintenance and repairs of the molds. Also on site, is a state of the art testing and technical service lab to carry out all in-process, and long-term inspection plans.

Agru America will start production of PE-to-steel transition fittings in Andrews, SC in 2016. The transition fittings will be offered in sizes from ½" CTS to 16" IPS. Connection types will include weld end, thread end, flanged end, and Victaulic configurations. Agru America will have its own, in-house, electrostatic coating line to apply a corrosion resistant epoxy coating to the steel end of the transition. This will greatly increase the durability, and overall lifespan of the transition fittings. Transition fittings are sold extensively into the oil and gas gathering, gas distribution, and water distribution markets in the United States today.

2016 will bring additional fittings to the Agru America product line. We will also offer NSF Certified HDPE Ball Valves in a size range from 2" IPS through 8" IPS, as well as electrofusion tapping



tees, branch saddles, and electrofusion equipment needed for our various markets including gas and water applications. The addition of electrofusion tapping tees and branch saddles will complete our extensive line of electrofusion fittings that includes electrofusion couplers currently being offered in the size range of ½" IPS through 48" IPS.

Agru America is very excited to bring the production of high quality molded PE fittings (previously produced in Austria) to the US. This investment will give Agru greater visibility, and significantly increase our presence in the US marketplace.

Agru America's Sure-Grip® CPL Manufacturing Line Records 1,000,000 Square Feet of Production

Agru America's Georgetown, SC-based production line for Sure-Grip® Concrete Protective Liners (CPL) has now manufactured 1,000,000 square feet of CPL to date. The Plant is capable of producing Sure-Grip® in widths up to 10' (3.05m) and thicknesses up to 5mm. In addition, it can produce smooth sheets up to 6mm and has co-extrusion capabilities for producing material with a signal layer. This production milestone is in addition to the millions of square feet of Sure-Grip® already produced by Agru internationally.

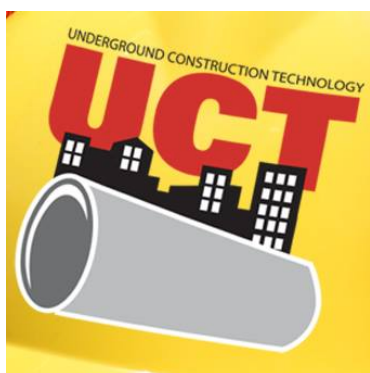
Agru America's Sure-Grip® CPL provides an economical and long-term corrosion prevention solution for the construction and rehabilitation of concrete containment and transmission systems. Advantages include: an extremely long service life, high back-pressure and pull-out resistance, very low maintenance, the elimination of both exfiltration and infiltration, and high chemical and mechanical resistance.





2016 Global Waste Management Symposium

Visit Agru America at booth #12 at North America's #1 technical conference for the presentation of applied and fundamental research on waste management from January 31 through February 3, 2016 at the Hyatt Regency Indian Wells Resort & Spa in Indian Wells, California.



Underground Construction Technology International Conference & Exhibition (UNT)

For 21 years UCT has been the meeting place for business-professionals involved in maintaining the underground utility pipe infrastructure. Visit Agru America at booth #313 from February 3 through February 4, 2016 at the Georgia World Conference Center in Downtown Atlanta, Georgia.



SME Annual Conference & Expo

The SME Annual Conference & Expo (ACE) is the only conference dedicated to all disciplines of mining engineering. Visit Agru America at booth #848 from February 21 - 24, 2016 at the Phoenix Convention Center in Phoenix, Arizona.



NPCA Precast Show

The Precast Show is the one place where you can find the industry's most important suppliers and foremost equipment experts under one roof. Visit Agru America at booth #315 from March 3 - 5, 2016 at the Gaylord Opryland Hotel in Nashville, Tennessee.

For more information on Agru America and
Agru America products, please reach out to a
member on our team.



Worldwide Excellence in Plastics and Geosynthetics | agruamerica.com

(800) 373-2478 Fax: (843) 527-2738

500 Garrison Road Georgetown, SC 29440 U.S.A

salesmkg@agruamerica.com | twitter.com/agruamerica |

linkedin.com/company/agru-america-inc.

facebook.com/agruamerica